



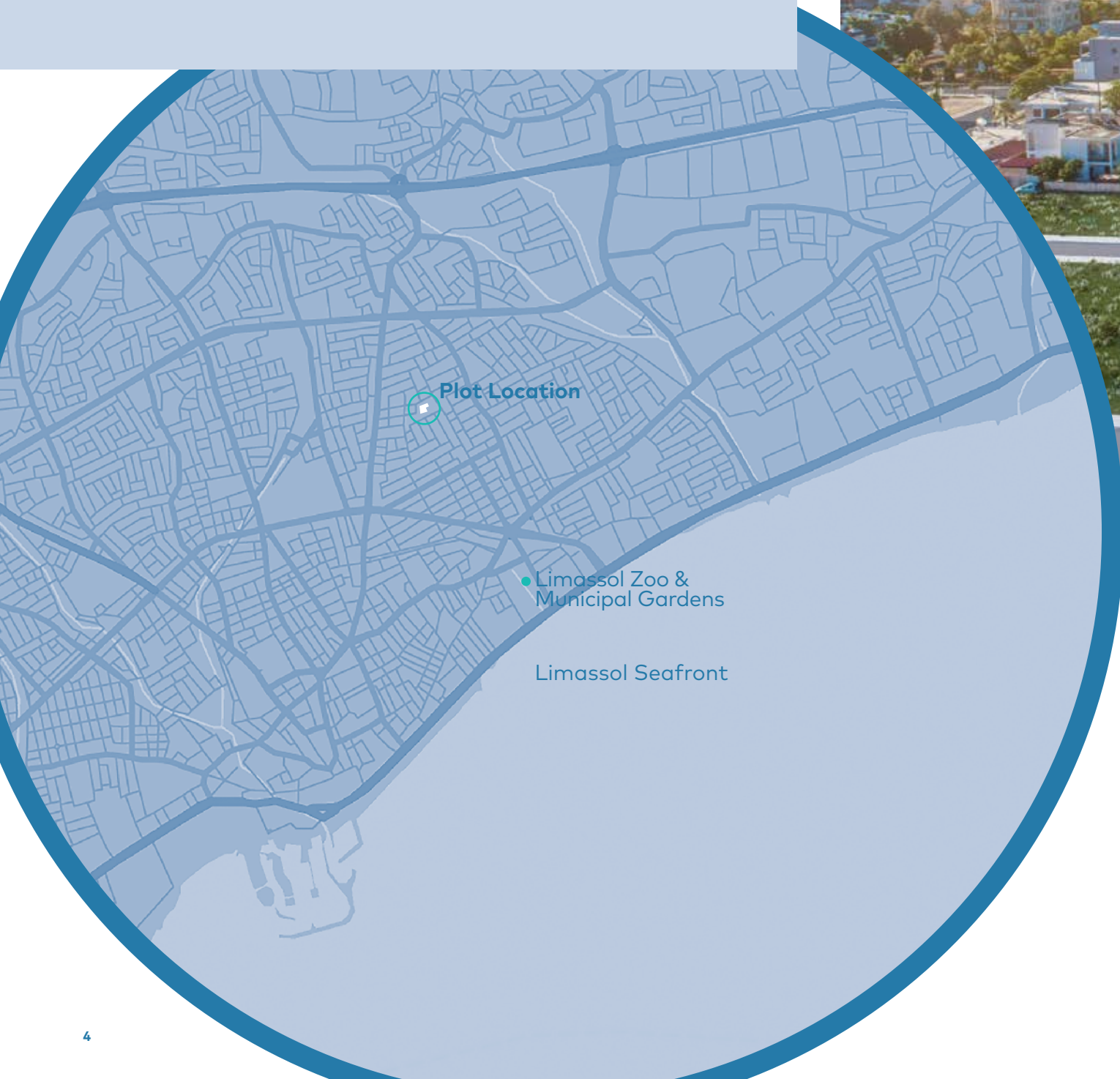
A RESIDENTIAL PROJECT
BY **TOPBUILD**

An architectural rendering of a modern, multi-story apartment building at dusk. The building features a curved, cantilevered design with large glass windows and balconies. The balconies are adorned with greenery, and the interior lights are on, creating a warm glow. The building is situated next to a parking lot with several cars parked. In the foreground, there is a landscaped area with trees and a small pond. The sky is a deep blue with some clouds.

HIGHPOINT

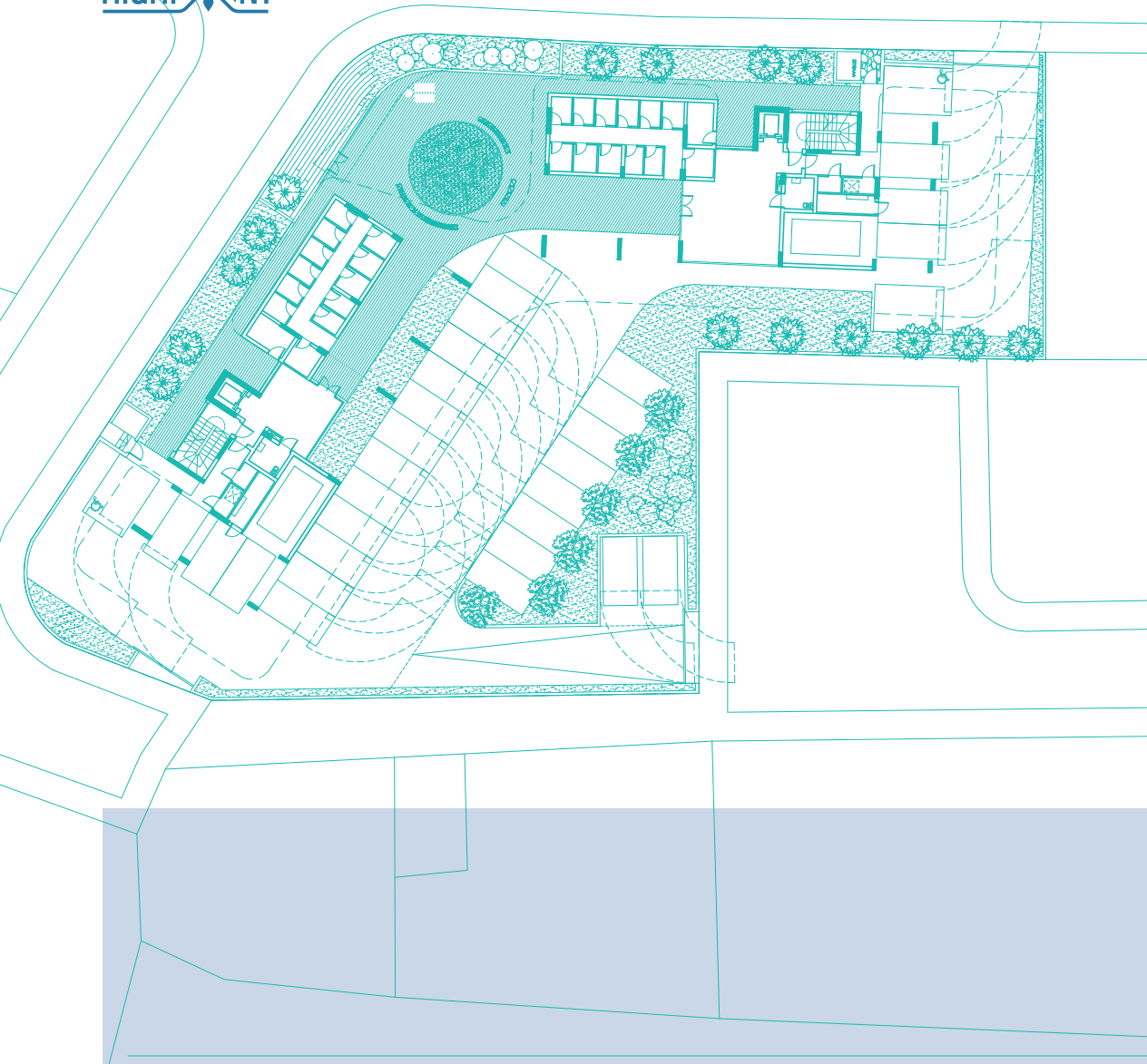
26 apartments of tranquility
and modern living **in the heart**
of the city of Limassol

ABOUT THE LOCATION



HIGHPOINT

Highpoint Residence is a contemporary development situated in a quiet residential area at the Centre of Limassol, within easy reach of the beach. All the city facilities are close and easily accessible. There are 26 apartments within two buildings each with a separate entrance.



ABOUT THE PROJECT



The development is situated in a large 2275m² plot. The two buildings that make up the residential development are placed in the northernmost part of the plot, allowing for maximum parking spaces and landscaped areas. Each building consists of 12 apartments in the first four floors (2 2-bedroom and 1 3-bedroom apartments on each floor) and a 3-bedroom penthouse with roof garden and swimming pool on the fifth floor. Each apartment has one parking space and a storage area. The penthouses have an extra parking space each.

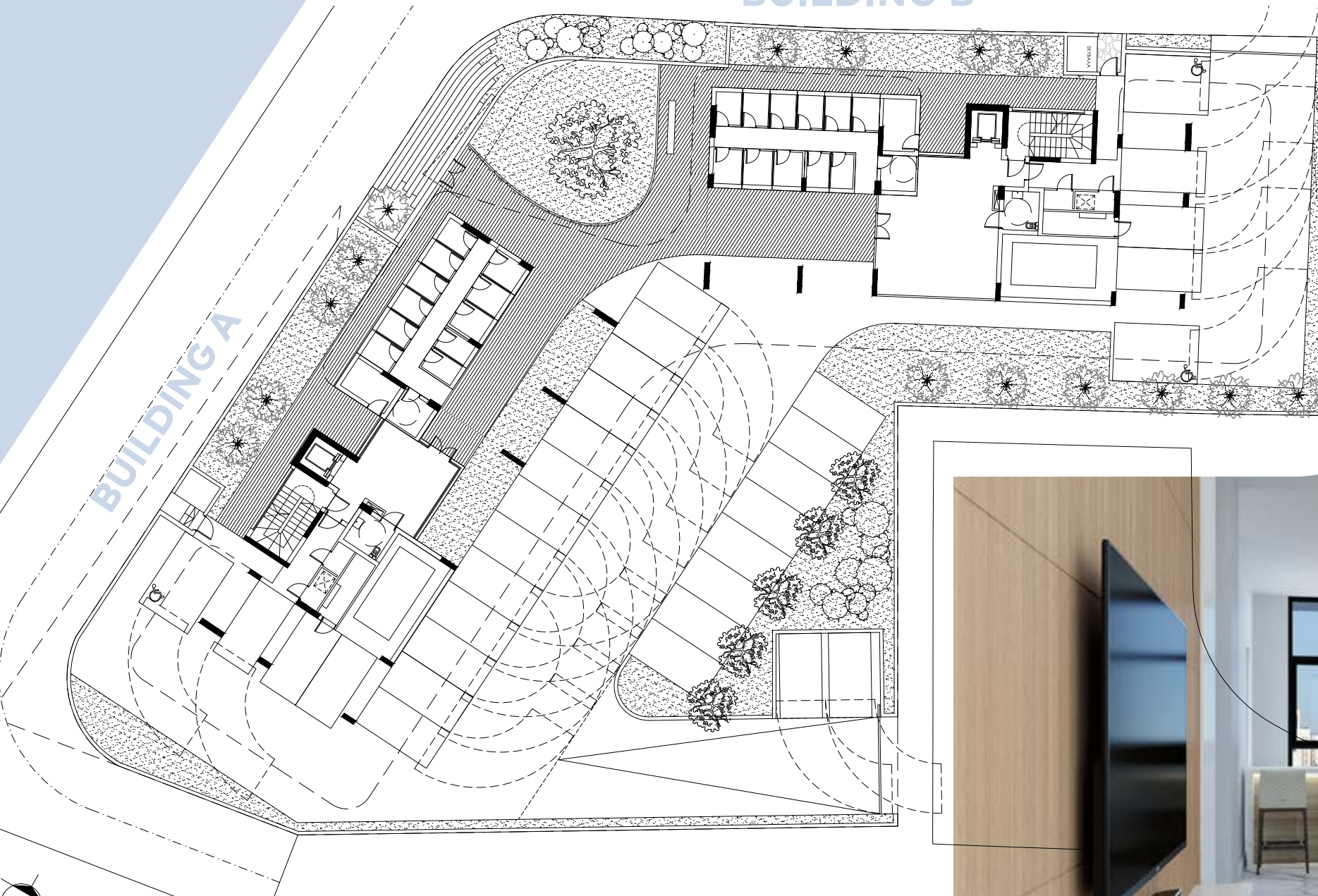
The buildings are designed in such a manner, so that every apartment is southern facing and most of them have sea view. The south / southeast orientation of the buildings, does not only offer the best view possible, but also enhances energy efficiency, allowing for natural controlled lighting and minimizing the need for mechanical heating and cooling during winter and summer.

The design follows a contemporary approach, with dynamic flowing lines, creating modern residential units that offer a high living standard.

HIGHPOINT



BUILDING B



GROUND FLOOR

The design follows a contemporary approach, with dynamic flowing lines, creating modern residential units that offer a high living standard.

The balconies are combined with planted areas in all the levels of the buildings, so that the landscape is a primary element in the materiality of the development. All the elements and materials are carefully selected to meet the highest requirements, with an emphasis in the use of natural materials in order to create a warm and cosy atmosphere both in the interior and the exterior.



The balconies are combined with planted areas in all the levels of the buildings, so that the landscape is a primary element in the materiality of the development.

HIGHPOINT

FLOORS: ONE
THROUGH FOUR

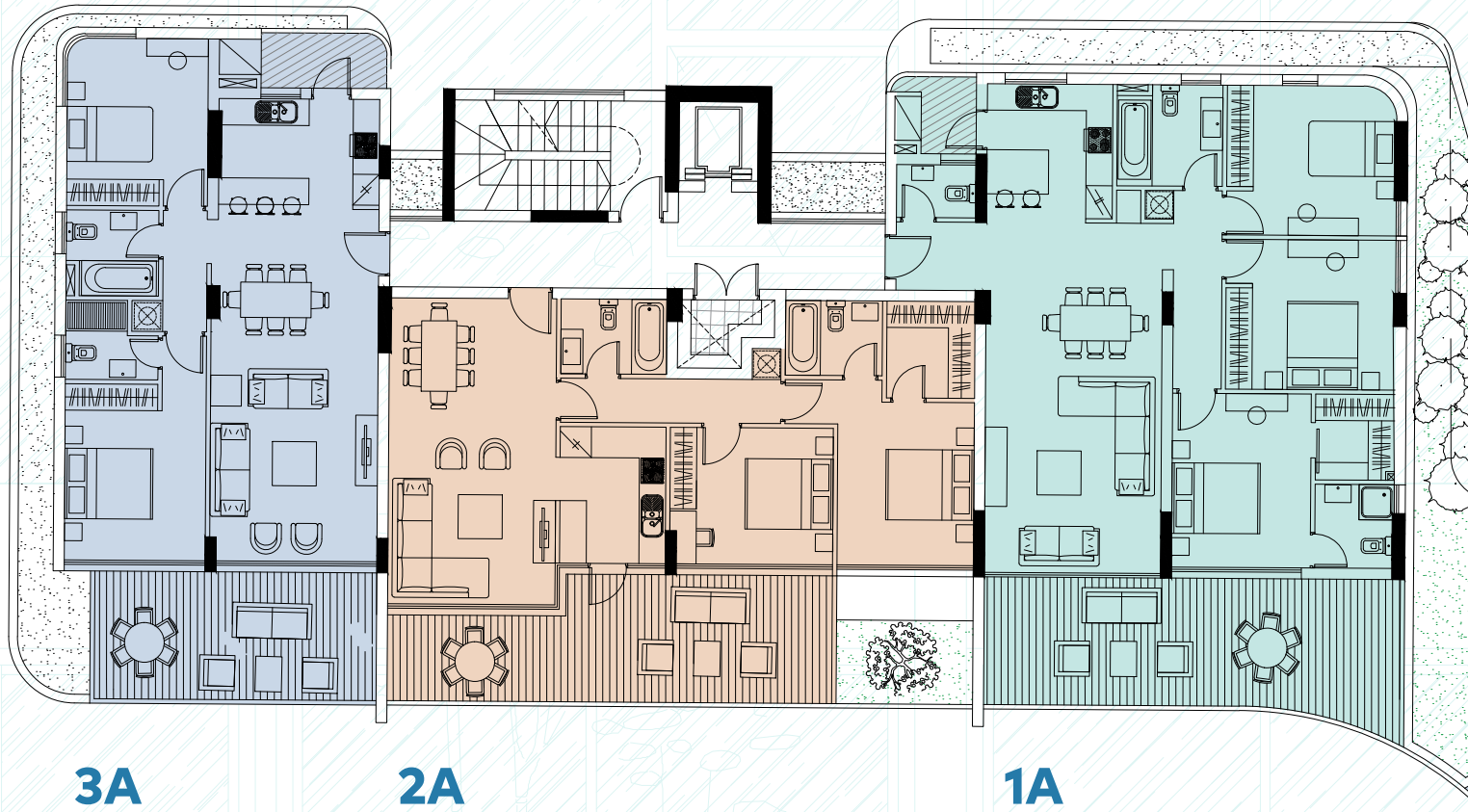
APARTMENTS
1A / 2A / 3A
1B / 2B / 3B



BUILDING A

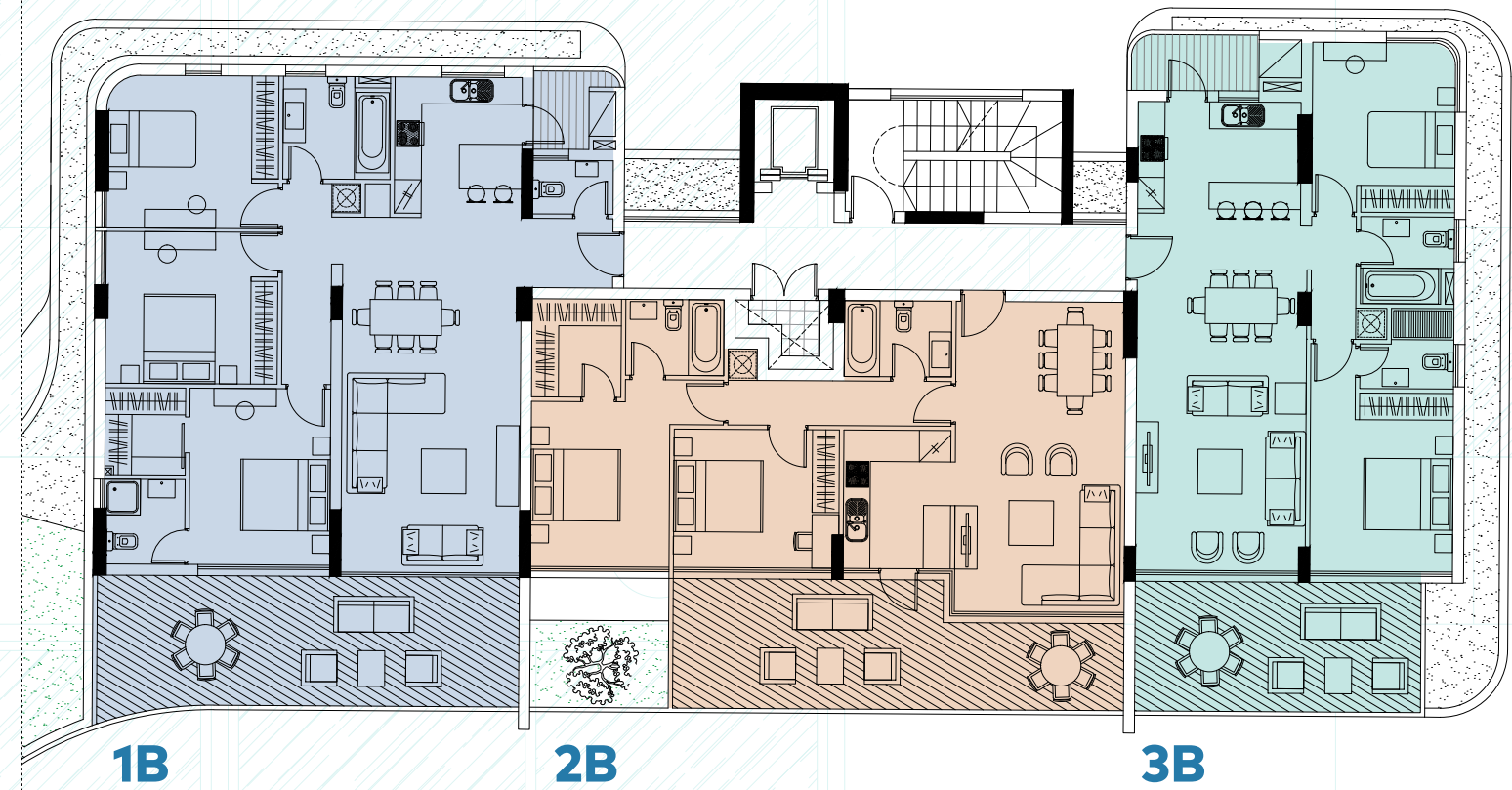
FLOORS: ONE THROUGH FOUR

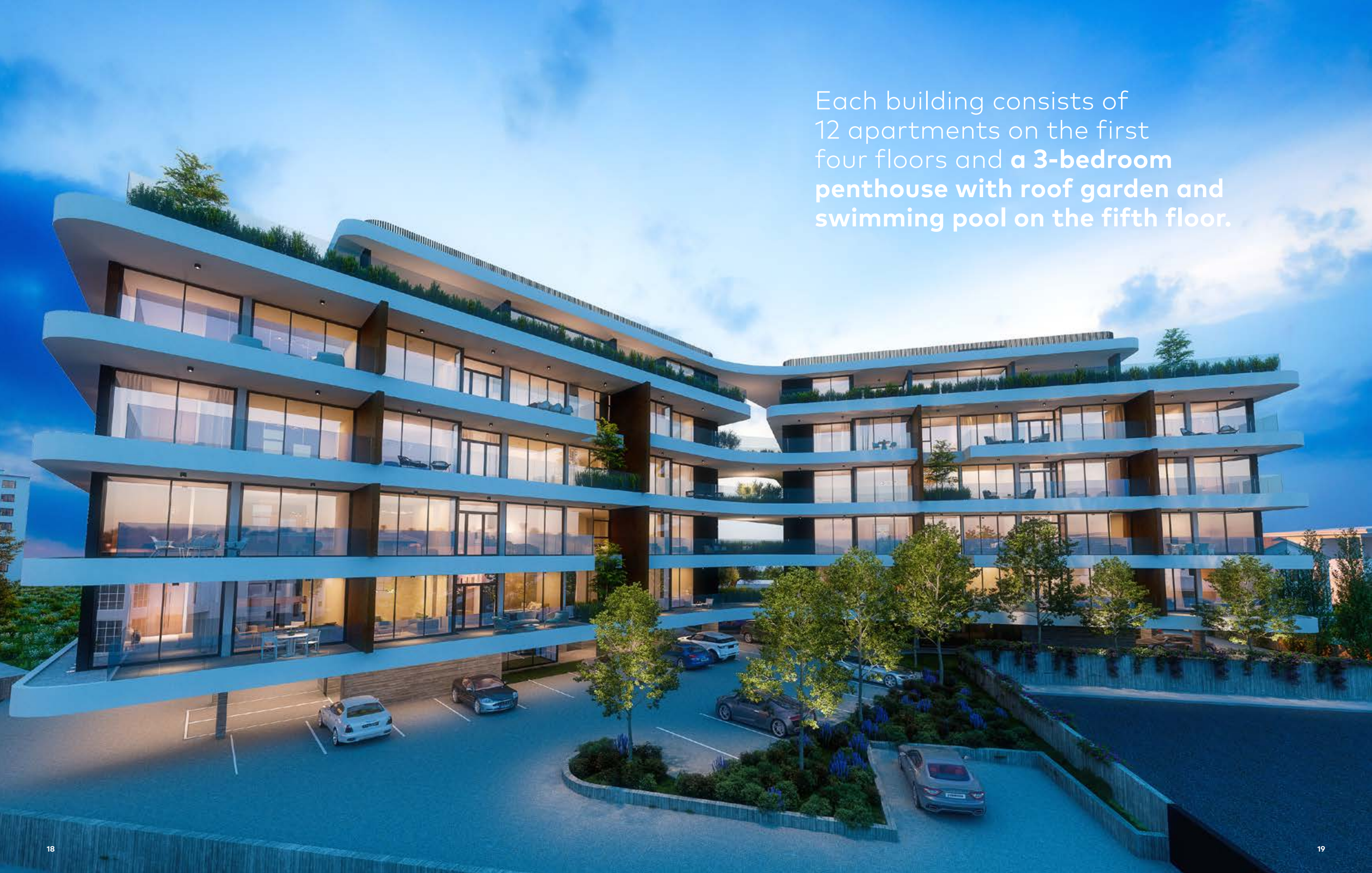
APARTMENTS 1A / 2A / 3A



BUILDING B

APARTMENTS 1B / 2B / 3B



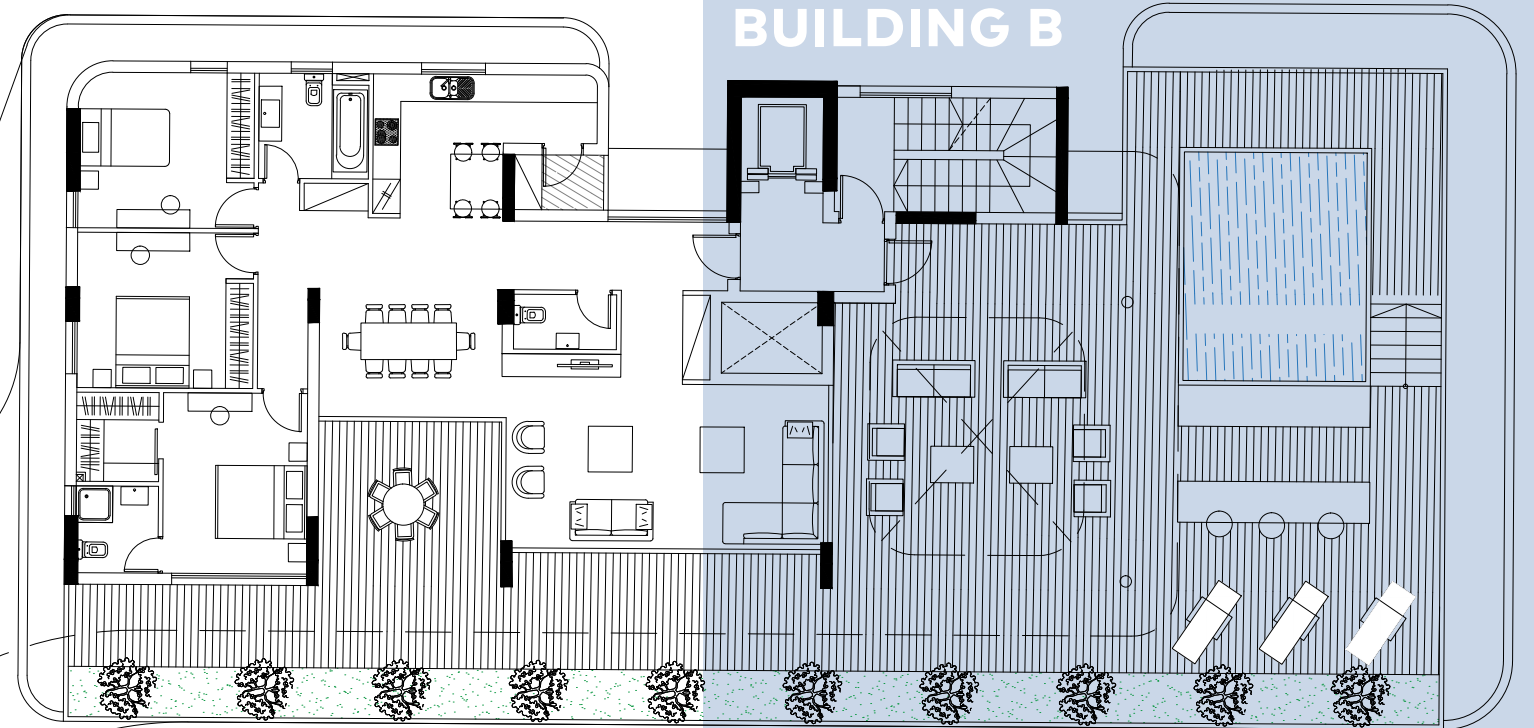


Each building consists of
12 apartments on the first
four floors and a **3-bedroom
penthouse with roof garden and
swimming pool** on the fifth floor.

The project features two
3-bedroom penthouses
with a roof garden and
swimming pool.

FIFTH
FLOOR

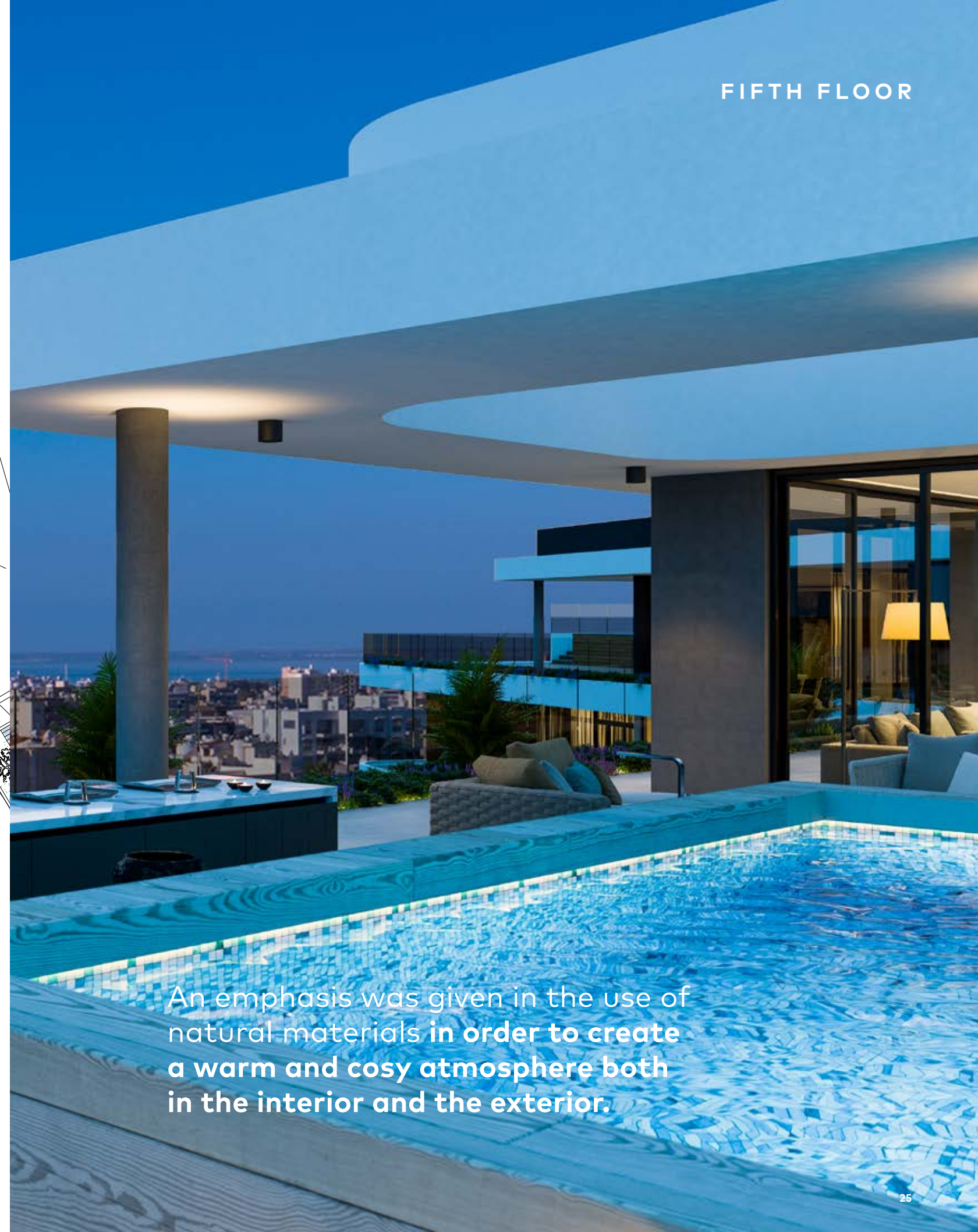
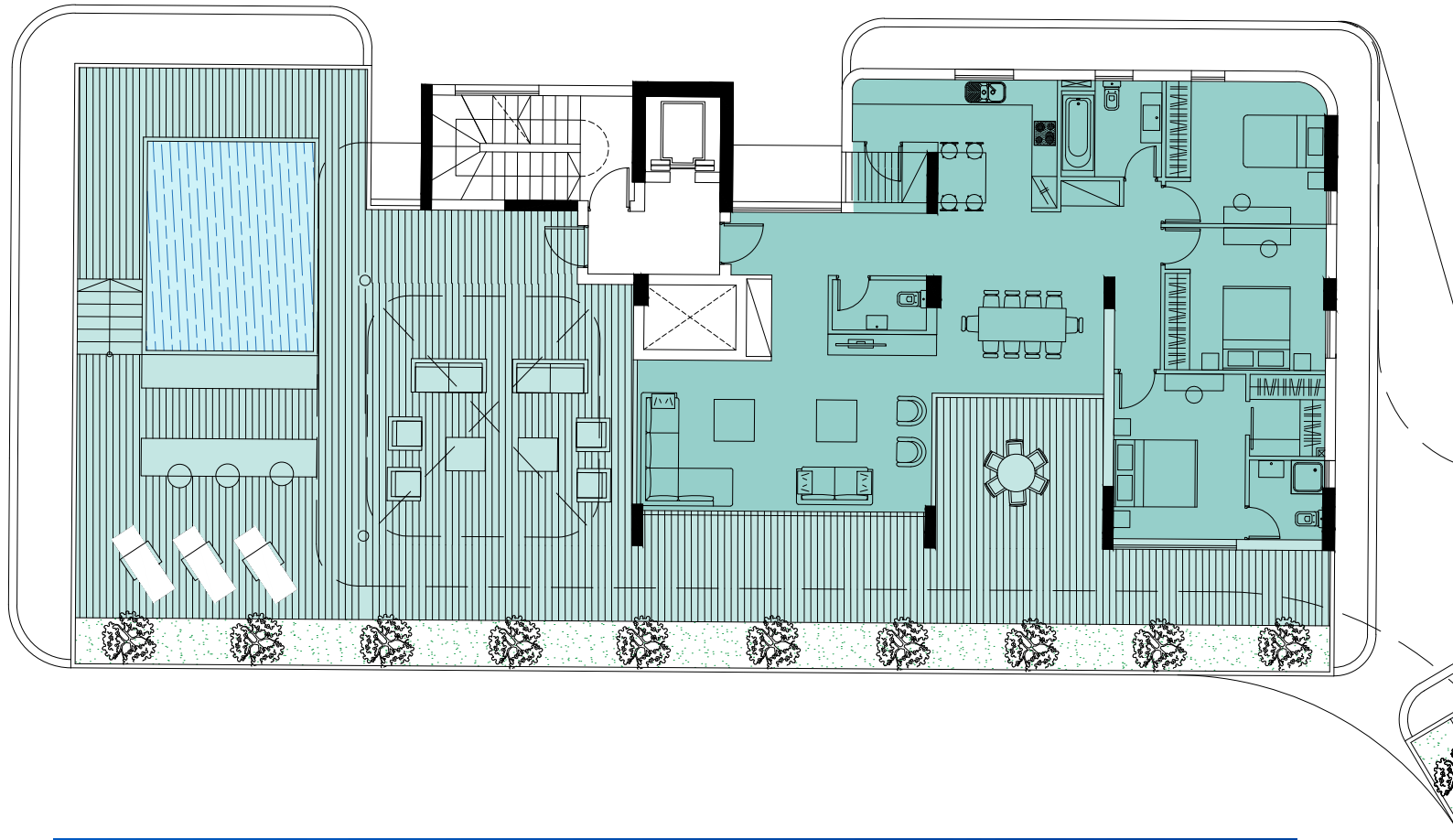
PENTHOUSES
501A / 501B



The south/southeast orientation of the buildings offers the best view possible & enhances energy efficiency.



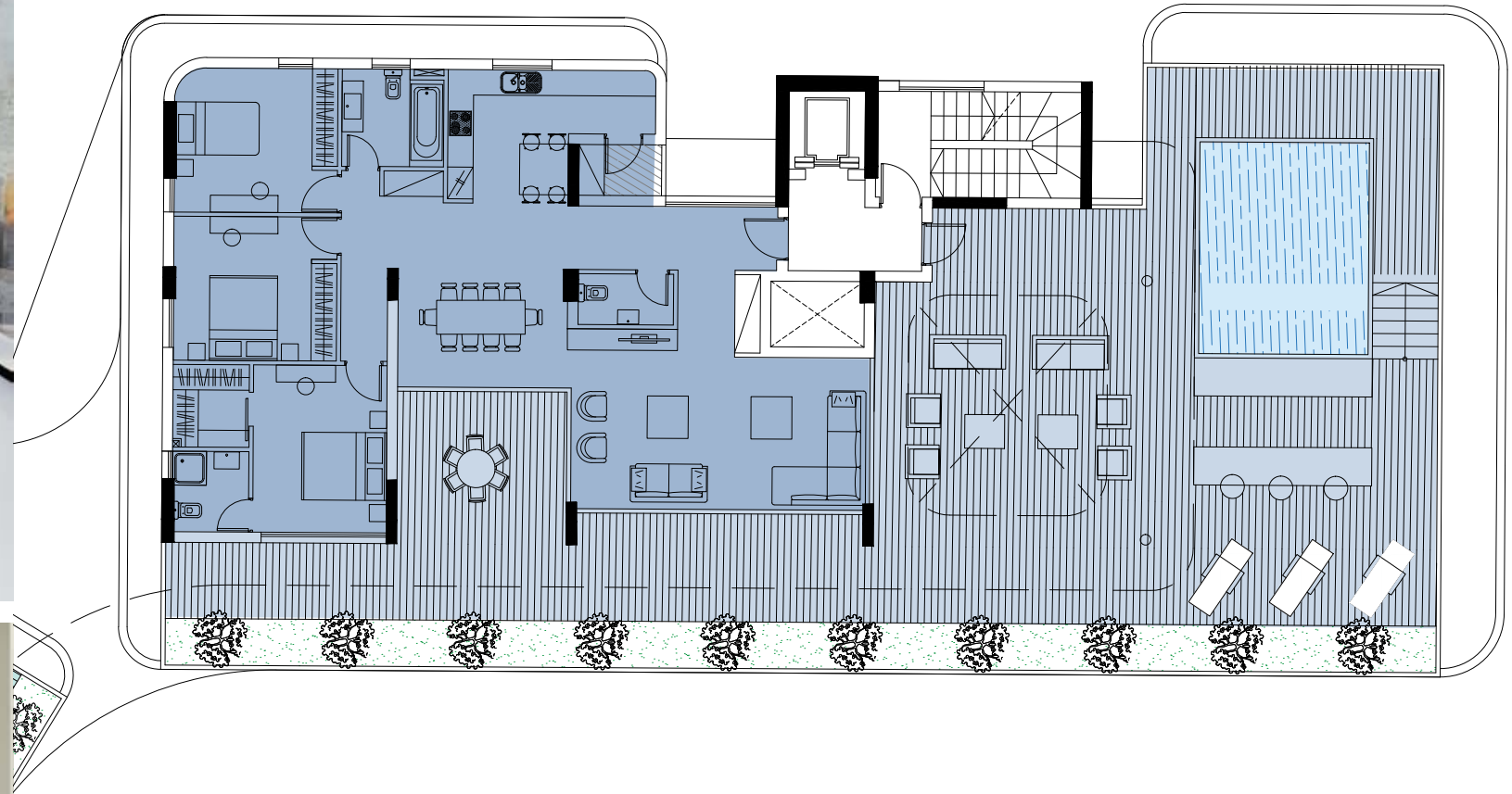
BUILDING A
FIFTH FLOOR
PENTHOUSE 501A



An emphasis was given in the use of natural materials in order to create a warm and cosy atmosphere both in the interior and the exterior.



FIFTH FLOOR
BUILDING B
PENTHOUSE 501B





HIGHPOINT



AREA SUMMARY (BUILDINGS A & B*)

LEVEL	AREA	TOTAL BUILT (interior) m²	COVERED VERANDA m²	UNCOVERED VERANDA m²	TOTAL VERANDA m²	BED-ROOMS Nº	PARKING Nº	STORAGE BLDG A/B m²
GROUND LEVEL	COMMON AREAS (AMEA)	6*						
	EAC ROOM	7*						
	CIRCULATION AREAS (LOBBY)	57*						
	CIRCULATION AREAS (STAIR)	17*						
	COMMON PARKING						3	
FIRST	APT 101	118	33 / 32		33 / 32	3	1	5.2
	APT 102	88	27		27	2	1	3.3
	APT 103	87	23		23	2	1	3.3
	CIRCULATION AREAS	33						
SECOND	APT 201	118	33 / 32		33 / 32	3	1	4.4
	APT 202	88	27		27	2	1	3.8/3.9
	APT 203	87	23		23	2	1	3.4
	CIRCULATION AREAS	33						
THIRD	APT 301	118	35		35	3	1	4
	APT 302	88	27		27	2	1	3.4
	APT 303	87	23		23	2	1	3.4
	CIRCULATION AREAS	33						
FOURTH	APT 401	118	30	4	34	3	1	4.2/4.1
	APT 402	88	27		27	2	1	3.4
	APT 403	87	23		23	2	1	3.5
	CIRCULATION AREAS	33						
FIFTH	APT 501	146	75	124	199	3	2	7.9/8
	CIRCULATION AREAS	24						
	TOTAL BLOCK A	1585	406 / 405	128	534 / 535		17	53.2
	TOTAL BLOCK B	1642	406 / 405	128	534 / 534		17	53.3

TECHNICAL SPECIFICATIONS

GENERAL STRUCTURE

Foundations & Superstructure
Reinforced concrete in accordance with the antiseismic standards and regulations

Internal Walls
100mm brickwork

External Walls
250mm brickwork covered with thermal plaster

Insulation and Waterproofing
Thermal Insulation in all floors and roof and polyurethane waterproofing system in verandas and roof

FINISHES

Living – Dining Room
Floating type wooden floor or marble tiles

Bedrooms
Floating type wooden floor, Italian made wardrobes

Kitchen
Marble tiles,
Italian cabinets and synthetic stone worktops

Verandas
Italian ceramic tiles
Front Doors / Internal Doors
Italian-made

External Walls
Fair-face Concrete / Class A Alucobond panels
3 coats of waterproof paint

Bathrooms / W.C.
Italian made ceramic tiles or marble
Sanitary ware and mixers from reputable manufacturers

Windows / External Doors
Thermal colored aluminum Double glazed

Internal Walls
2 coats of plaster / Spatula
3 coats of emulsion paint
Barbeque Area for penthouses

MECHANICAL SERVICES

Plumbing:

- Pressured water system

Heating:

- Air cooled heat pump system
- Convactor units for apartments
- Underfloor heating for fourth floor and penthouses
- Production of hot water for domestic use

Air conditioning:

- VRV heat pump system
- Ceiling concealed indoor units for all living areas

Lift:

- 2 Machine Roomless Lifts (MRL)

Swimming pool:

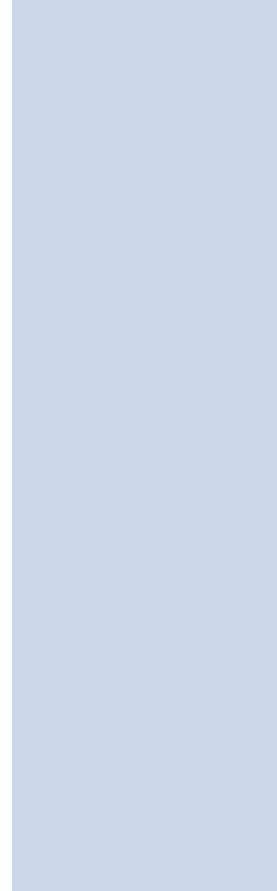
- Private swimming pool for each penthouse
- Vanishing edge
- LED underwater lighting

ELECTRICAL SERVICES

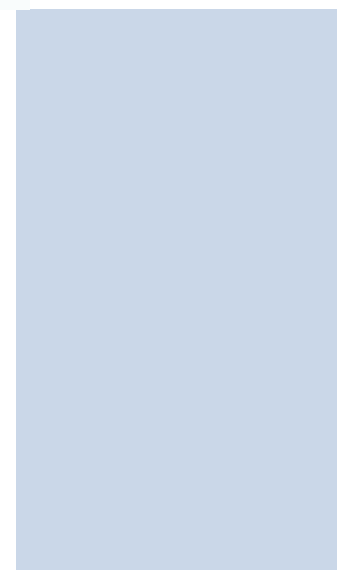
Lighting:

- Provision for master lighting control
- LED Spot lights in corridors, kitchen and bathrooms
- Chandeliers in Living Room and Bedrooms
- LED Hidden Light to emphasize interior spaces
- Façade Lighting
- Landscape Lighting
- Occupancy sensors for parking areas

Central Control System to control lights and motorized blinds
Traffic barrier
Wi-Fi network
TV System/ Central IF-RF TV Distribution System
Intruder alarm/ Fire detection system
CCTV system
Video-entrance system
Audio/ video system



HIGHPOINT





A detailed architectural rendering of a modern, multi-story residential building. The building features a series of curved balconies with white railings and dark window frames. The balconies are adorned with lush green plants and trees. The building's facade is a mix of dark panels and light-colored wood or stone. A large, mature tree stands in the foreground, partially obscuring the building. The sky is a clear, deep blue. The overall style is contemporary and sophisticated.

HIGHPOINT

HIGHPOINT
RESIDENCE



A RESIDENTIAL
PROJECT BY
TOPBUILD

Tel.: +357 96069372
topbuild@highpointresidence.com
www.highpointresidence.com